

THIRD FLOOR PLAN

LEGEND FOR LED LIGHTS

NO.	SYMBOL	DESCRIPTION	QTY	IMAGE
1	—	15W SUSPENDED LUMINAIRE CAT NO. WIPRO-LM43-241DALI 140 (UGWC)	-	
2	—	20W SUSPENDED LUMINAIRE CAT NO. WIPRO-LM43-321DALI 140 (UGWC)	-	
3	+	12W DOWNLIGHTER (CAT NO. WIPRO-LD06-151 xxx40 xx)	-	
4	□	30W RECESSED 2X2 LUMINAIRE 6500K (CAT. NO. WIPRO-LM5-51DALI-40 xx)	-	
5	●	30W RECESSED ROUND LED LUMINAIRE (CAT NO. WIPRO- LM2SCR-52-L040-VX)	-	
6	□	30W RECESSED LED 2X2 LUMINAIRES 6500K CAT NO. WIPRO-GRCD 10RC03HP4034 IMMACULATE NAG	-	
7	▲	15W STRAPE AXICOR + ANGULAR SUSPENDED LUMINAIRE CAT NO. WIPRO-LM34-14120-Y40WC2)	-	
8	▲	15W ANGULAR SUSPENDED LUMINAIRE (CAT NO. WIPRO- LM34-90-90-40WC2)	-	
9	—	20W 4FT TUBELIGHT LINEAR BATTEN	-	
10	—	LED STRIP - COVE LIGHTS	-	

LEGEND FOR ELECTRICAL

SB1	SWITCH BOARD WITH 6A SOCKET
SB2	EM SWITCH BOARD
—	LIGHT CONTROL(NORMAL)
—	LIGHT CONTROL (EMERGENCY)
—	LIGHT CIRCUITING(NORMAL)
—	LIGHT CIRCUITING(EMERGENCY)
■	DISTRIBUTION BOARDS
○	PIR SENSOR

NOTE:
IN CUBICLES SWITCHBOARDS NOT CONSIDERED.
AS IT WILL BE CONTROLLED FROM COMMON
SWITCHBOARD/MCB

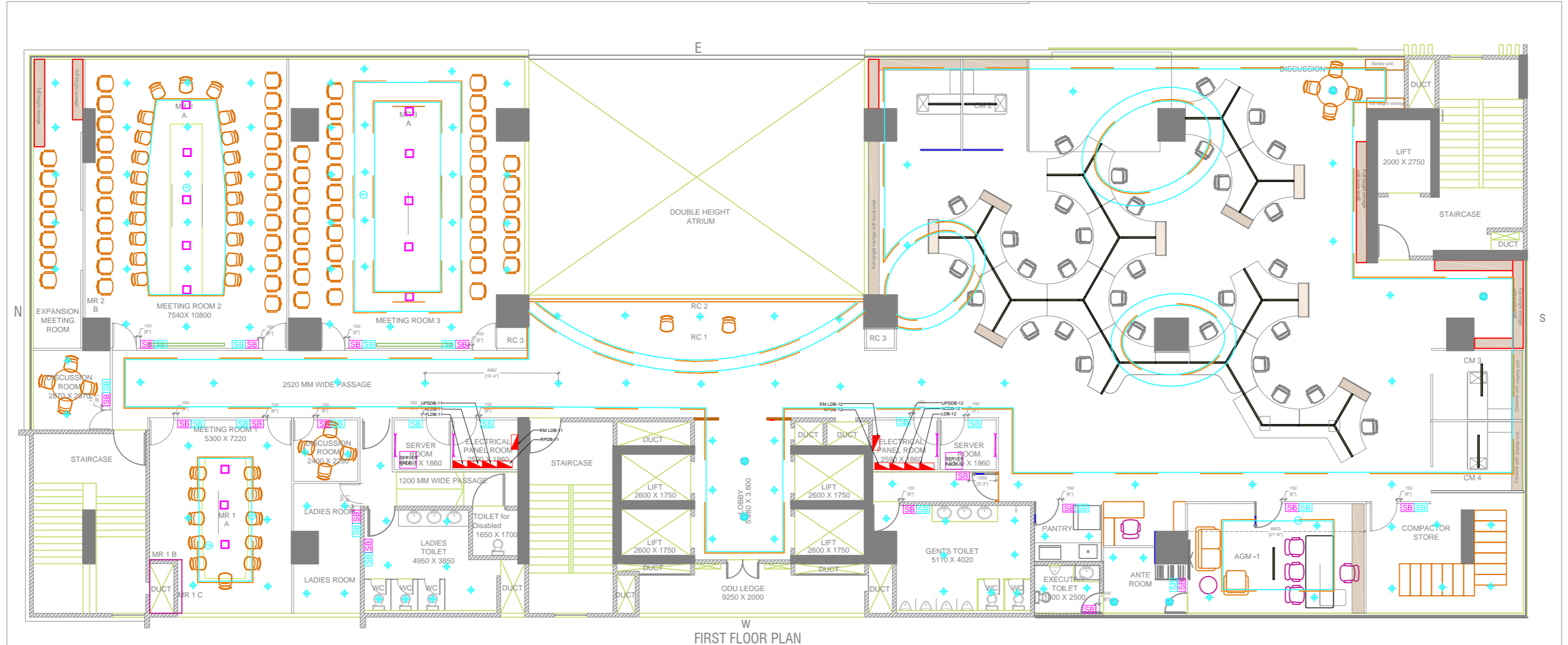
REV	REVISION	DRN	BYCHKD	BYAPRD	BY	DATE
R-0	TENDER DRAWING	MSP	SMJ	PSK		18.11.24
REVISIONS IN DRAWINGS						
ARCHITECT :-						
PMC :-						
CLIENT :- MITIMITRA ARCHITECT AND ASSOCIATES						
PROJECT :- CLOCK TOWER, LHO, SBI, KHARADI, PUNE						
TITLE :- LIGHTING LAYOUT-THIRD FLOOR						
SCALE	DATE	DRG NO.	REV.			
NTS	18.11.24	1658-EL-LTG-03	R-0			

RELEASED FOR PRELIMINARY TENDER INFORMATION APPROVAL CONSTRUCTION



THIS DRAWING AND THE CONNECTED DESIGN IS OUR SOLE PROPERTY. IT IS LOANED ON CONDITION OF RETURN ON DEMAND. IT SHALL NOT BE COPIED, LENT OR USED WITHOUT OUR PRIOR WRITTEN CONSENT.

TENDER DRAWING



FIRST FLOOR PLAN

LEGEND FOR ELECTRICAL:

	SWITCH BOARD WITH 6A SOCKET
	EM SWITCH BOARD
	LIGHT CONTROL(NORMAL)
	LIGHT CONTROL (EMERGENCY)
	LIGHT CIRCUITING(NORMAL)
	LIGHT CIRCUITING(EMERGENCY)
	DISTRIBUTION BOARDS
	PIR SENSOR

NOTE:
INCUBICLE SWITCHBOARDS NOT CONSIDERED, AS IT WILL BE CONTROLLED FROM COMMON SWITCHBOARDS/MCS.

LEGEND FOR LED LIGHTS

NO.	SYMBOL	DESCRIPTION	QTY	IMAGE
1		15W SUSPENDED LUMINAIRE CAT NO. WIPRO-LM43-241DALI 140 UGWC	-	
2		20W SUSPENDED LUMINAIRE CAT. NO. - WIPRO-LM43-321DALI 140 UGWC	-	
3		12W DOWNLIGHTER (CAT NO. WIPRO- LD06-151 xx40 xx)	-	
4		33W RECESSED 2'X2' LUMINAIRE 6500K (CAT. NO. WIPRO-LM9-451DALI-40 xx)	-	
5		33W RECESSED MOUNDED LED LUMINAIRE (CAT NO. WIPRO: LM230R-621-0440-W)	-	
6		33W RECESSED LED 2'X2' LUMINAIRES 6500K CAT NO. WIPRO:CRCC 16R038P4934 IMMACULATE NXG)	-	
7		15W Y SHAPE AXIION+ ANGULAR SUSPENDED LUMINAIRE (CAT NO. WIPRO-LM34-141120-Y40WC2)	-	
8		15W ANGULAR SUSPENDED LUMINAIRE (CAT NO. - WIPRO: LM34-930-90-40WC2)	-	
9		20W, 4FT TUBELIGHT LINEAR BATTEN	-	
10		LED STRIP - COVE LIGHTS	-	

R1	REVISED AS PER COMMENTS	MSP	SMJ	PSK	19.11.24
R-0	TENDER DRAWING	MSP	SMJ	PSK	12.11.24
REV	PARTICULARS OF REVISION	DRN	BYCHKD	BYAPRD	BY DATE

REVISIONS IN DRAWINGS

ARCHITECT :-
MITIMITRA ARCHITECT AND ASSOCIATES

PMC :-

CLIENT :-

PROJECT :-
CLOCK TOWER, LHO, SBI, KHARADI, PUNE

TITLE :-
LIGHTING LAYOUT-FIRST FLOOR

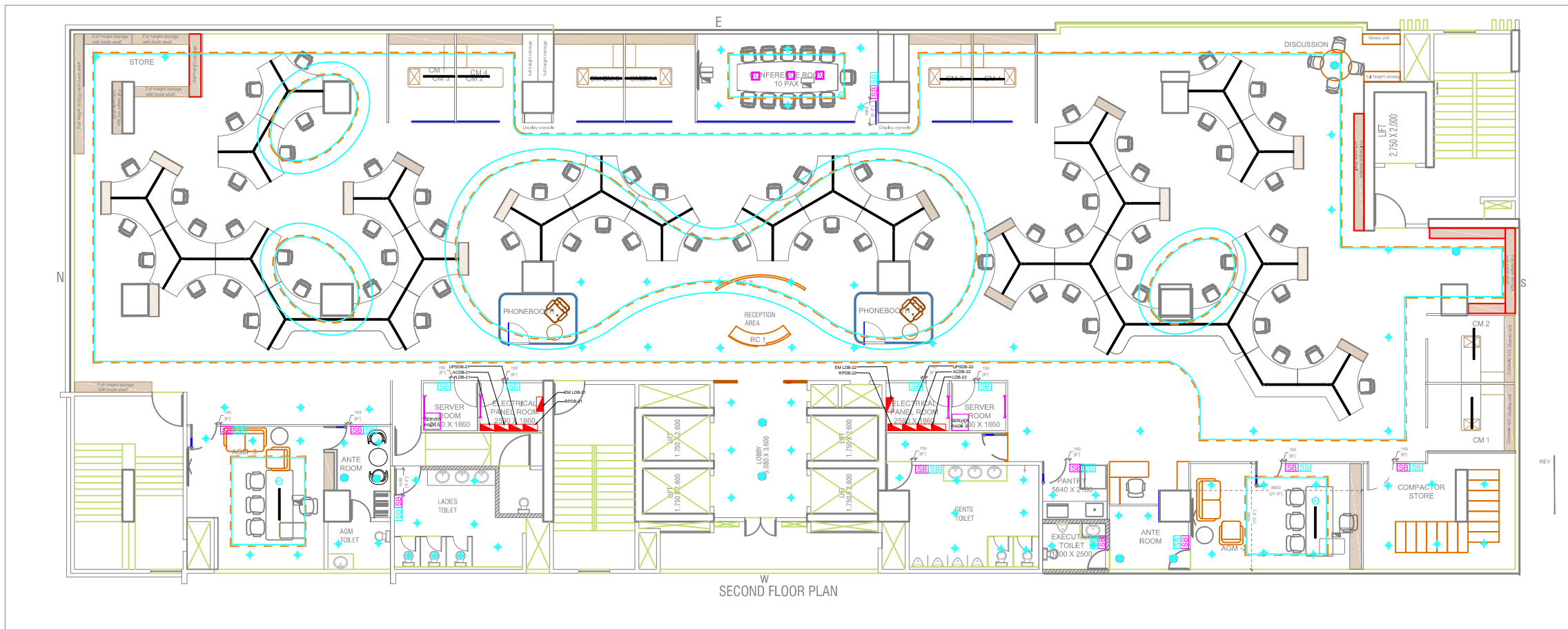
SCALE	DATE	DRG NO.	REV.
1:100	12.11.24	1658-EL-LTG -01	R-0

RELEASED FOR PRELIMINARY TENDER INFORMATION APPROVAL CONSTRUCTION

VISION ELECTRO - MECHANICAL CONSULTANTS PVT. LTD.
 2 SHWETTA 98/28 BHUSARI COLONY PUNE 411038. Tel: 25285686 Telefax: 25285685, email: office@nmdce.com

THIS DRAWING AND THE CONNECTED DESIGN IS OUR SOLE PROPERTY. IT IS LOANED ON CONDITION OF RETURN ON DEMAND. IT SHALL NOT BE COPIED, LENT OR USED WITHOUT OUR PRIOR WRITTEN CONSENT.

TENDER DRAWING



SECOND FLOOR PLAN

LEGEND FOR LED LIGHTS

NO.	SYMBOL	DESCRIPTION	QTY	IMAGE
1	—	15W SUSPENDED LUMINAIRE CAT NO. WPRO-LM43-31(DALI) 140 (LGWC)		
2	—	15W SUSPENDED LUMINAIRE CAT NO. WPRO-LM43-32(DALI) 140 (LGWC)		
3	◆	12W DOWNLIGHTER (CAT NO. WPRO-L26-181 (40W/40))		
4	◆	15W RECESSED 2x2 LUMINAIRE 600K (CAT NO. WPRO-LM8-45(DALI-40))		
5	◆	15W RECESSED MOUNTED LED LUMINAIRE (CAT NO. WPRO- LM20R-42-L-D40-40)		
6	◆	15W RECESSED LED 2x2 LUMINAIRES 600K CAT NO. WPRO-GRCD- RORCOPR600 (IMMACULATE RGT)		
7	◆	PIR SHAPE ANTI-COR- ANGULAR SUSPENDED LUMINAIRE (CAT NO. WPRO-LM8-L4150-26(W/20))		
8	◆	PIR ANGLE SUSPENDED LUMINAIRE (CAT NO. WPRO- LM8-20-40-40WC2)		
9	—	20W AFT TUBELIGHT LINEAR BATTEN		
10	—	LED STRIP - COVE LIGHTS		

LEGEND FOR ELECTRICAL

SB	SWITCH BOARD WITH 6A SOCKET
ESB	EM SWITCH BOARD
—	LIGHT CONTROL(NORMAL)
—	LIGHT CONTROL (EMERGENCY)
—	LIGHT CIRCUITING(NORMAL)
—	LIGHT CIRCUITING(EMERGENCY)
■	DISTRIBUTION BOARDS
○	PIR SENSOR

NOTE:
INCUBICLE SWITCHBOARDS NOT CONSIDERED,
AS IT WILL BE CONTROLLED FROM COMMON
SWITCHBOARDS/MCB.

R1	REVISED AS PER COMMENTS	MSP	SMJ	PSK	19.11.24
R-0	TENDER DRAWING	MSP	SMJ	PSK	13.11.24
REV	PARTICULARS OF REVISION	DRN	BYCHKD	BYAPRD	BY DATE

REVISIONS IN DRAWINGS

ARCHITECT :-
MITIMITRA ARCHITECT AND ASSOCIATES

PMC :-
-

CLIENT :-
SBI KHARADI

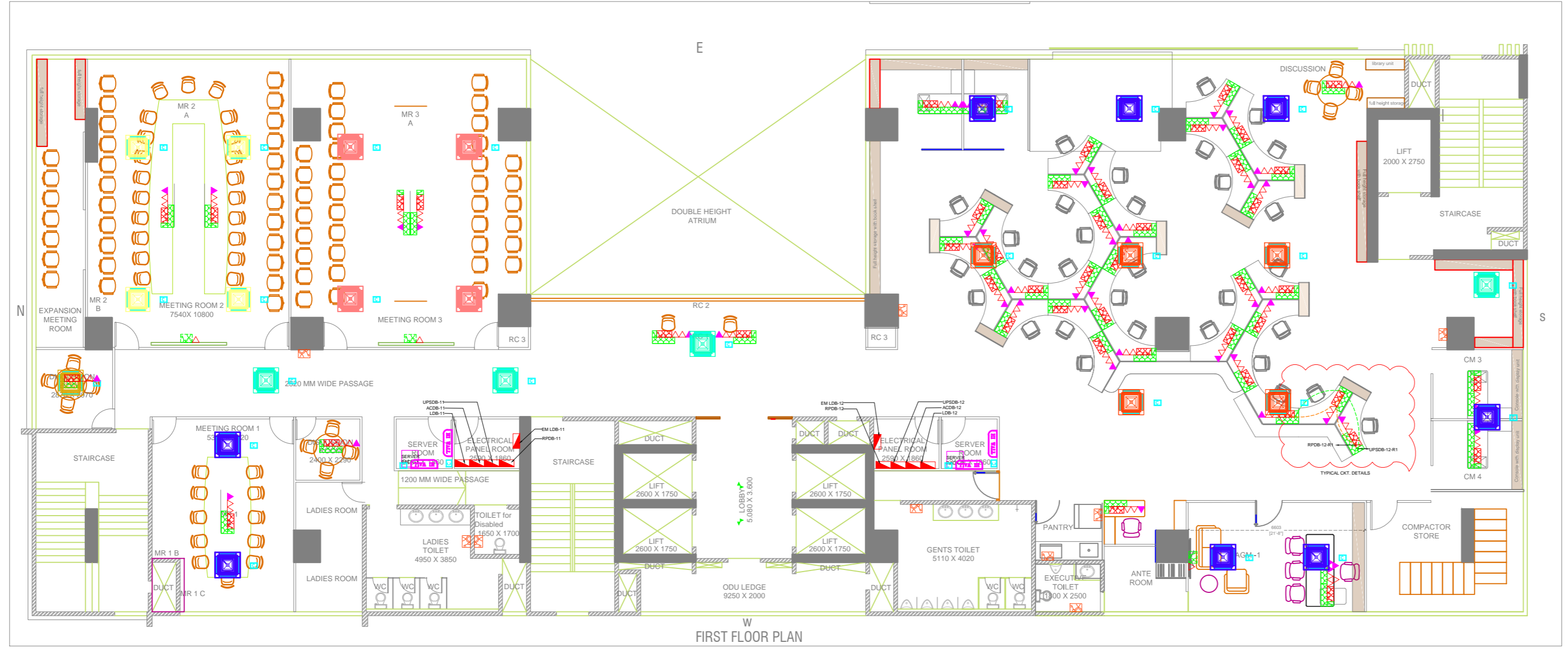
PROJECT :-
CLOCK TOWER, LHO, SBI, KHARADI, PUNE

TITLE :-
LIGHTING LAYOUT-SECOND FLOOR

SCALE	DATE	DRG NO.	REV.	ORIENTATOR
1:100	13.11.24	1658-EL-LTG-02	R-0	

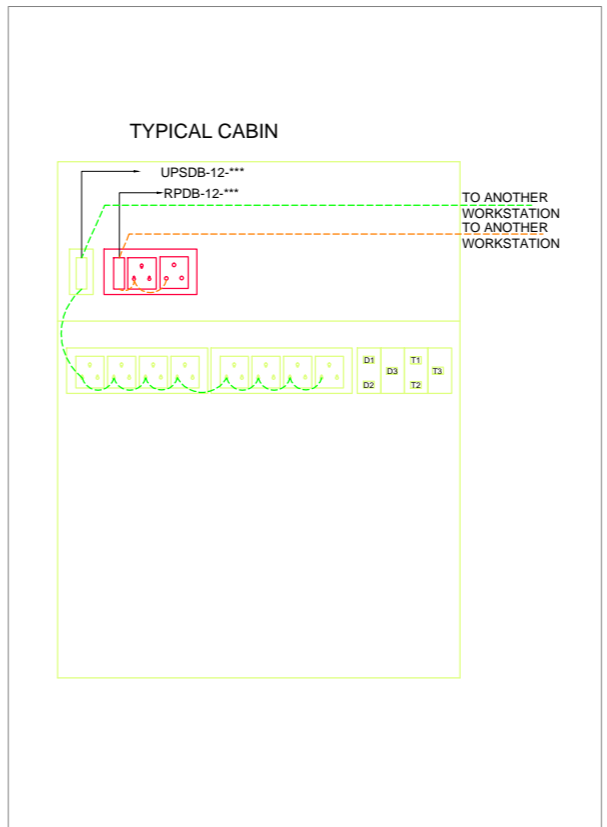
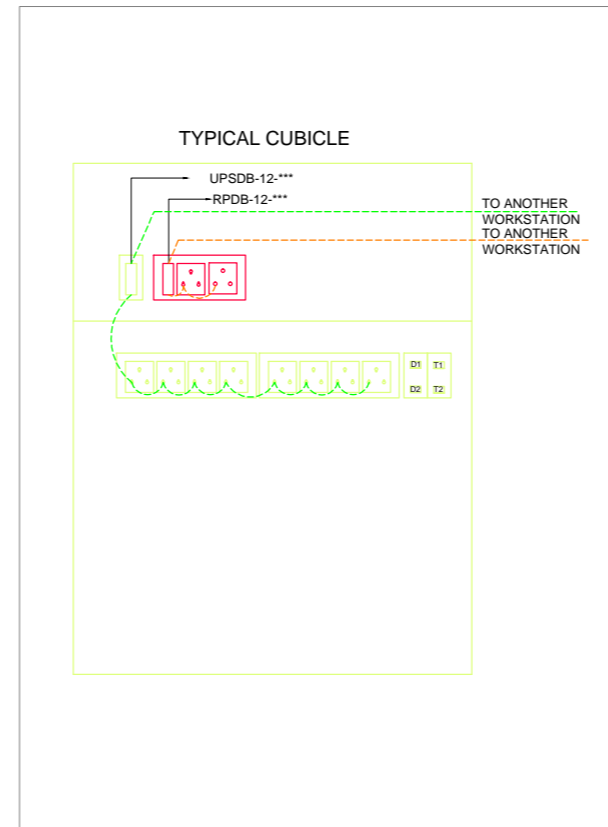
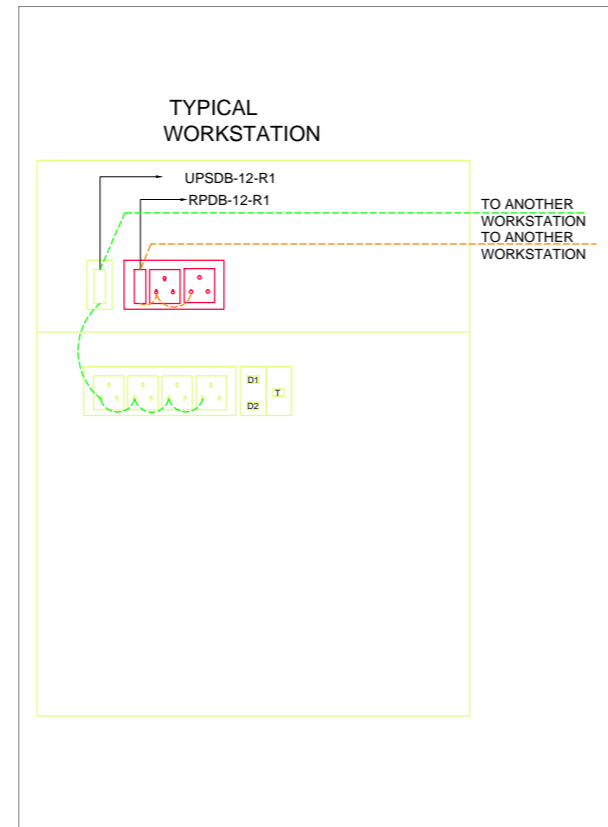
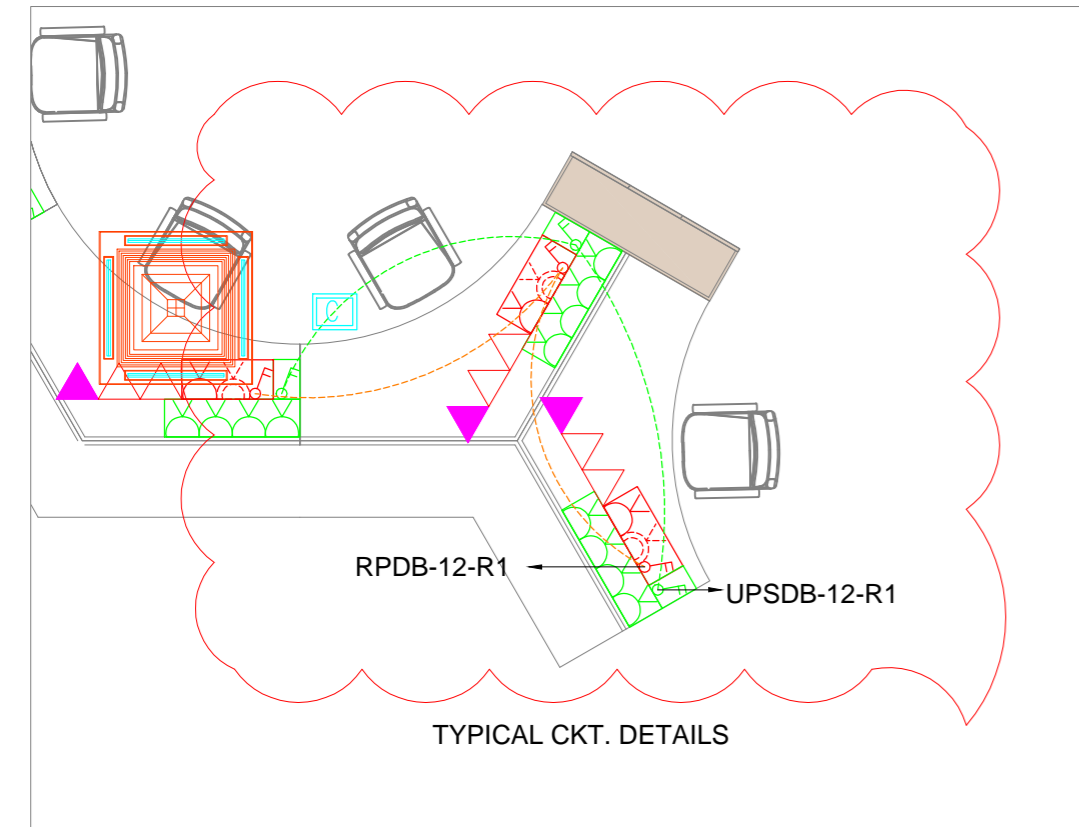
RELEASED FOR PRELIMINARY TENDER INFORMATION APPROVAL CONSTRUCTION

TENDER DRAWING



LEGEND:

SYMBOL	DESCRIPTION
	UPS POWER POINT
	1 NO-16A 1 SWITCH & 1 NO 6/16A SOCKET
	4 NOS-6A SOCKET(BELOW TABLE)-UPS POWER
	1 NO-16A SWITCH(ON TABLETOP)-UPS POWER
	ELV
	DATA POINT
	VOICE POINT
	RAW POWER POINT
	16A 1 SWITCH & 1 NO 6/16A SOCKET
	1 NO-6A SOCKET + 1 NO-16A SOCKET + 1 NO.16A SWITCH(ON TABLE TOP)-RAW POWER
	6A 1 SWITCH & 1 NO 6A SOCKET
	CONNECTOR FOR POWER SUPPLY FOR AC INDOOR UNIT AT CEILING/WALL AT NEAREST LOCATION
	DISTRIBUTION BOARDS



R-1	REVISED AS PER COMMENTS	MSP	SMJ	PSK	25.10.24
R-0	TENDER DRAWING	MSP	SMJ	PSK	22.10.24
REV	PARTICULARS OF REVISION	DRN	BYCHKD	BYAPRD.BY	DATE

REVISIONS IN DRAWINGS

ARCHITECT :-
-

PMC :-
-

CLIENT :-
MITIMITRA ARCHITECT AND ASSOCIATES

PROJECT :-
CLOCK TOWER, LHO, SBI, KHARADI, PUNE

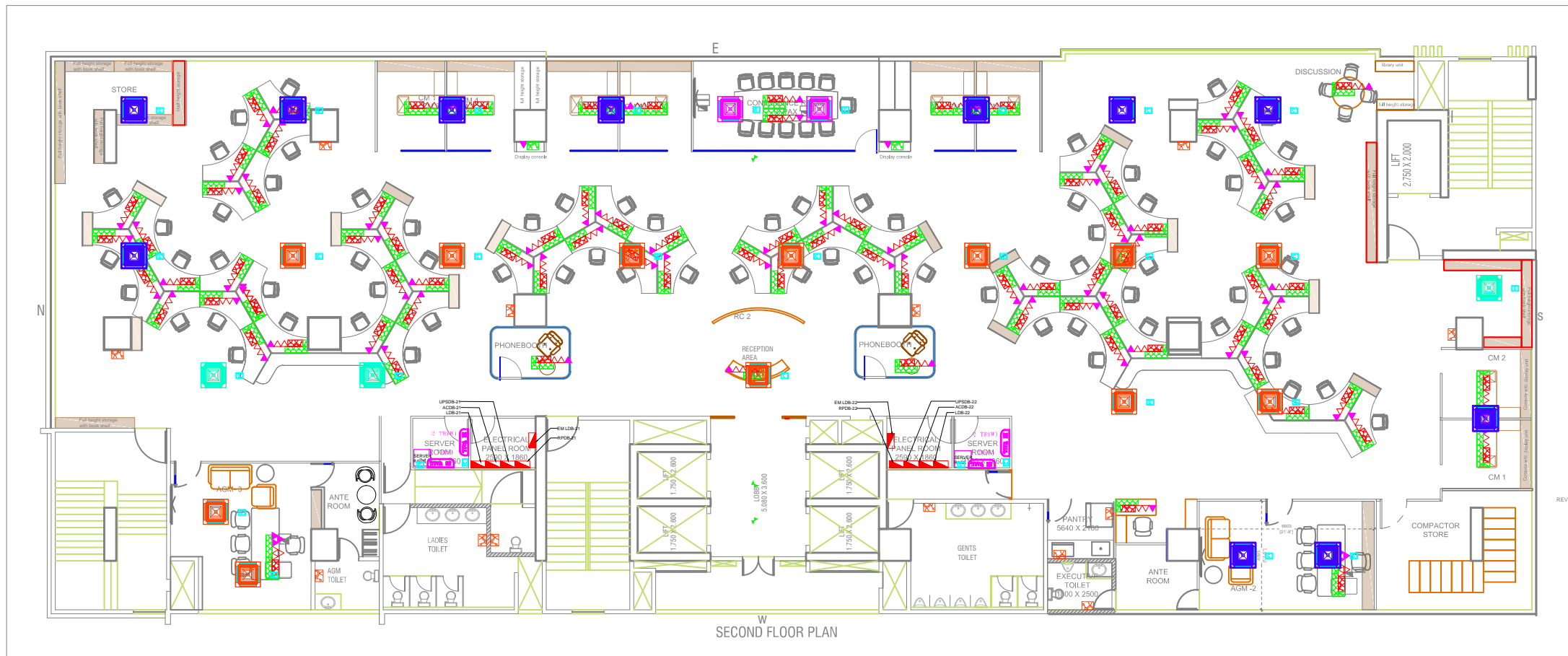
TITLE :-
POWER LAYOUT-FIRST FLOOR

SCALE DATE DRG NO. REV. SHEET 1 OF 1

NTS 22.10.24 1658-EL-PP-01 R-0

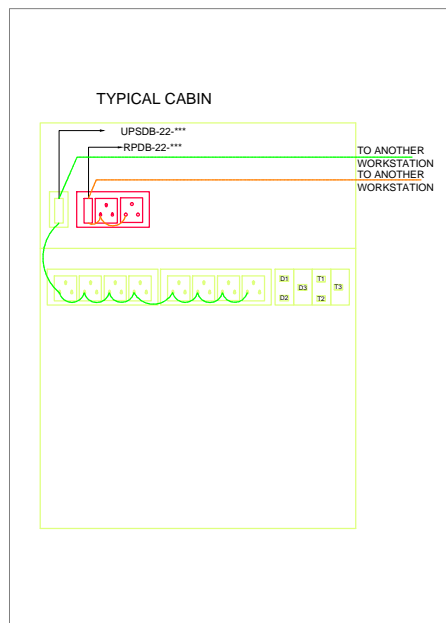
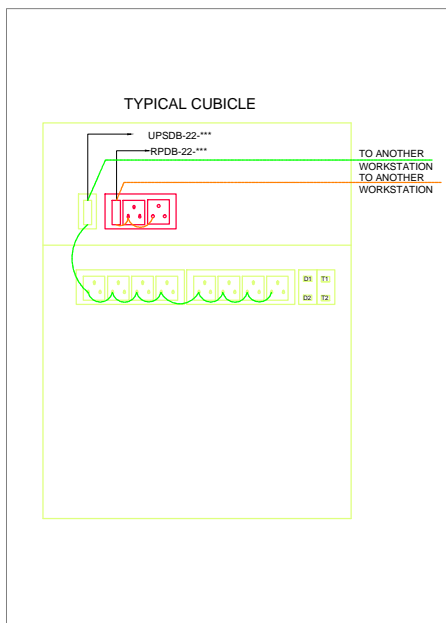
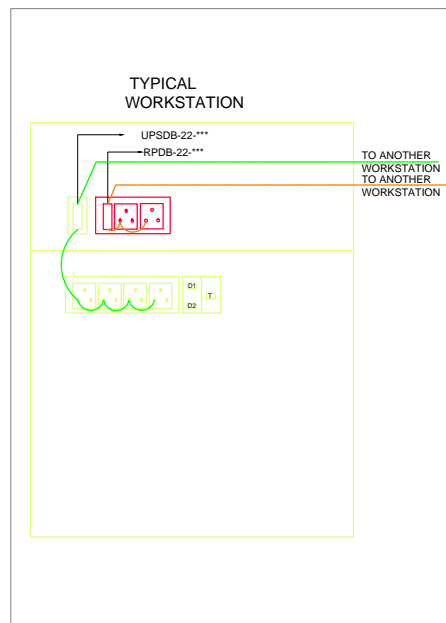
RELEASED FOR PRELIMINARY TENDER INFORMATION APPROVAL CONSTRUCTION

TENDER DRAWING



LEGEND:

SYMBOL	DESCRIPTION
UPS POWER POINT	
[Symbol]	1 NO-16A 1 SWITCH & 1 NO 6/16A SOCKET
[Symbol]	4 NOS-6A SOCKET(BELOW TABLE)-UPS POWER
[Symbol]	1 NO-16A SWITCH(ON TABLETOP)-UPS POWER
[Symbol]	ELV
[Symbol]	DATA POINT
[Symbol]	VOICE POINT
RAW POWER POINT	
[Symbol]	16A 1 SWITCH & 1 NO 6/16A SOCKET
[Symbol]	1 NO-6A SOCKET + 1 NO-16A SCKET + 1 NO.16A SWITCH(ON TABLE TOP)-RAW POWER
[Symbol]	6A 1 SWITCH & 1 NO 6A SOCKET
[Symbol]	CONNECTOR FOR POWER SUPPLY FOR AC INDOOR UNIT AT CEILING/WALL AT NEAREST LOCATION
[Symbol]	DISTRIBUTION BOARDS



R-1	REVISED AS PER COMMENTS	MSP	SMJ	PSK	25.10.24
R-0	TENDER DRAWING	MSP	SMJ	PSK	22.10.24
REV	PARTICULARS OF REVISION	DRN	BYCHKD	BYAPRD.BY	DATE

REVISIONS IN DRAWINGS

ARCHITECT :-
-

PMC :-
-

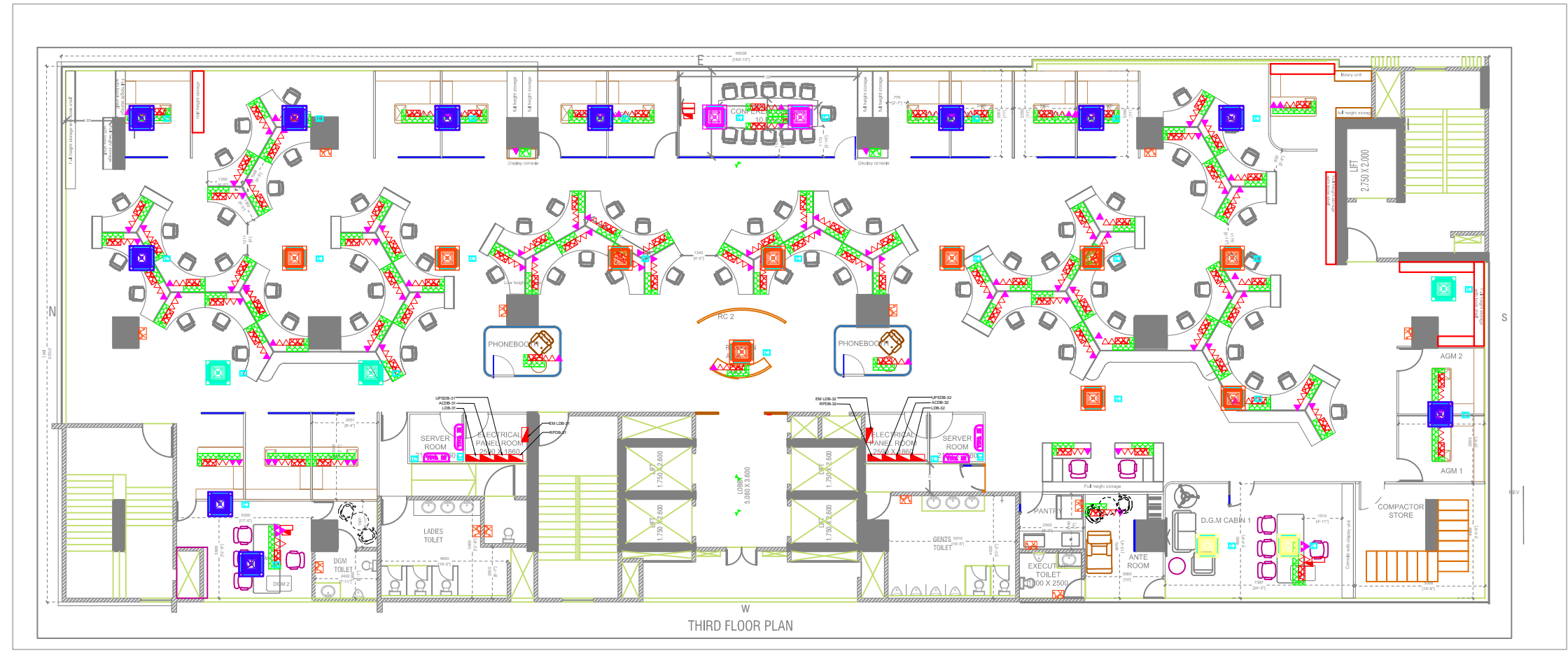
CLIENT :-
MITIMITRA ARCHITECT AND ASSOCIATES

PROJECT :-
CLOCK TOWER, LHO, SBI, KHARADI, PUNE

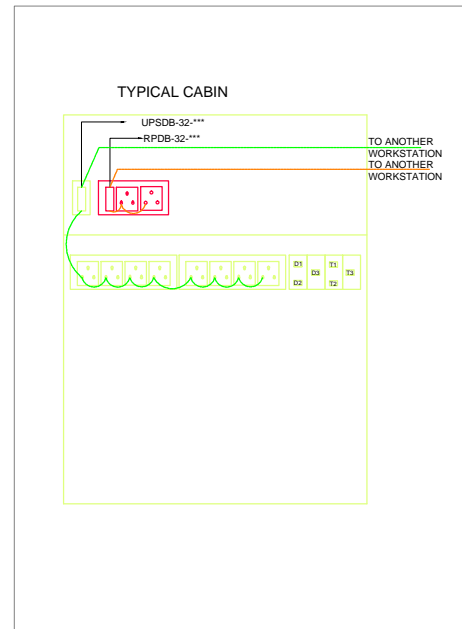
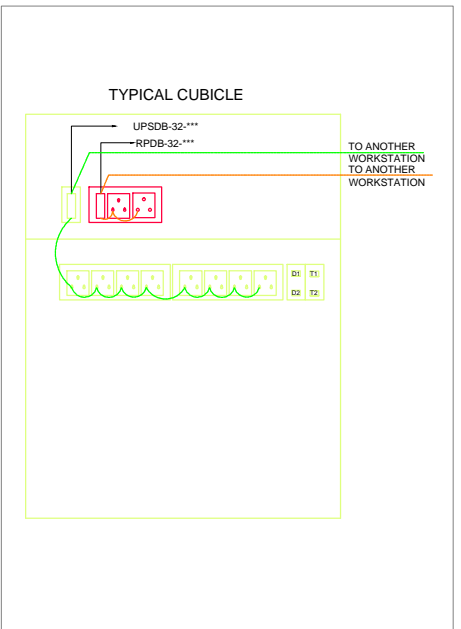
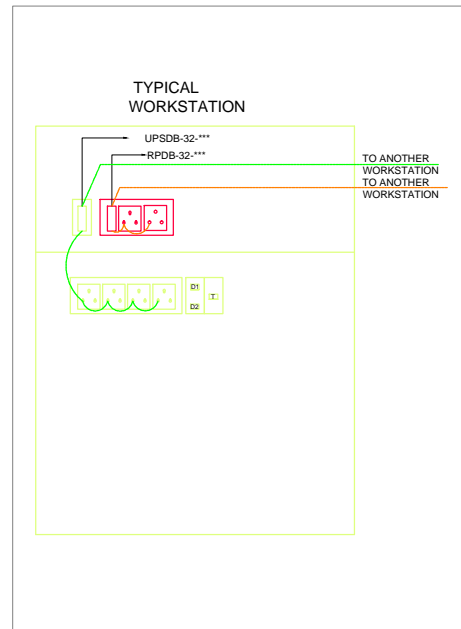
TITLE :-
POWER LAYOUT-SECOND FLOOR

SCALE	DATE	DRG NO.	REV.	ORIENTATOR
NTS	24.10.24	1658-EL-PP-02	R-0	

RELEASED FOR PRELIMINARY TENDER INFORMATION APPROVAL CONSTRUCTION



THIRD FLOOR PLAN

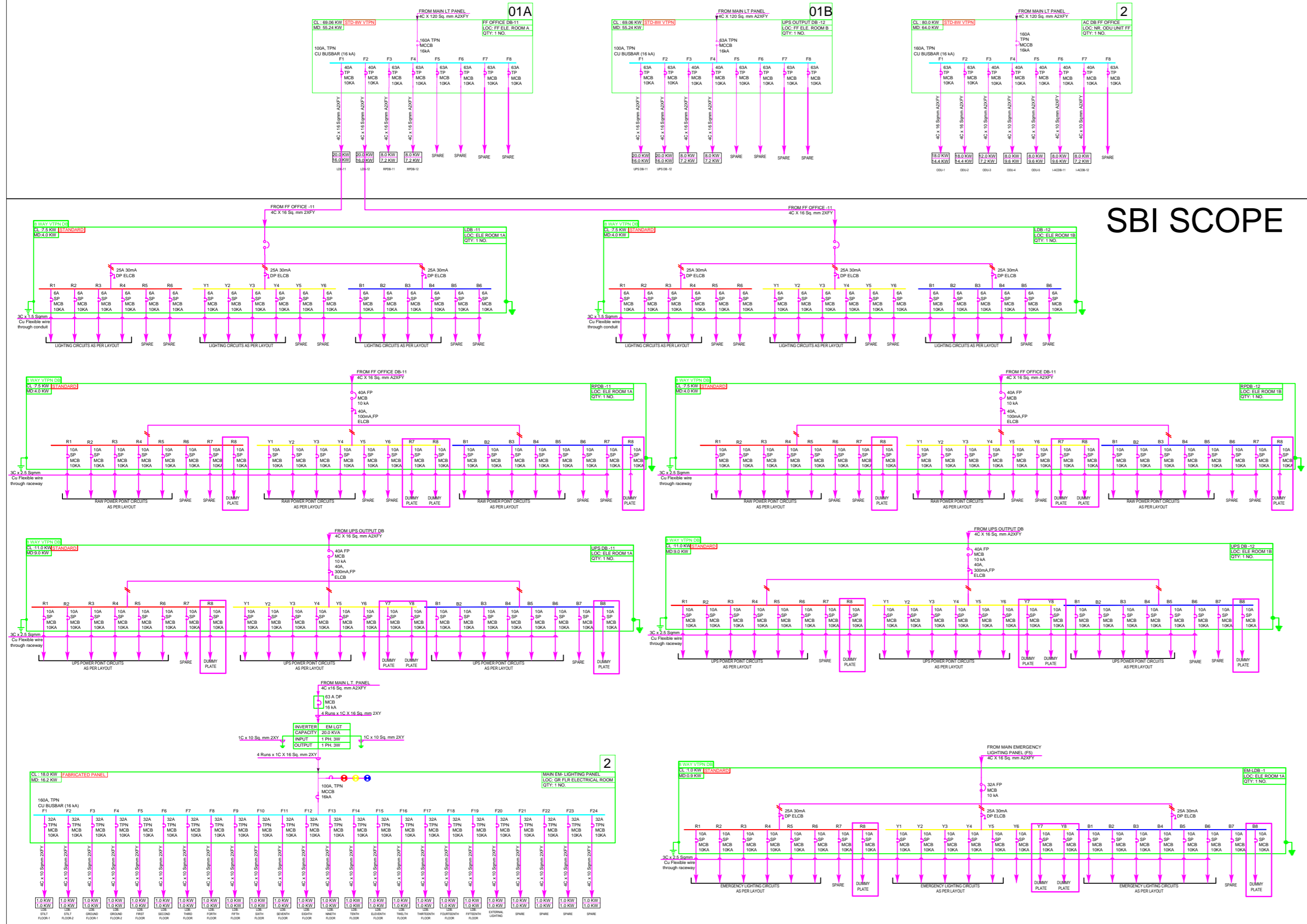


R-1	REVISED AS PER COMMENTS	MSP	SMJ	PSK	25.10.24
R-0	TENDER DRAWING	MSP	SMJ	PSK	25.10.24
REV	PARTICULARS OF REVISION	DRN	BYCHKD	BYAPRD	BY DATE
REVISIONS IN DRAWINGS					
ARCHITECT :-					
-					
PMC :-					
-					
CLIENT :-					
MITIMITRA ARCHITECT AND ASSOCIATES					
PROJECT :-					
CLOCK TOWER, LHO, SBI, KHARADI, PUNE					
TITLE :-					
POWER LAYOUT-THIRD FLOOR					
SCALE	DATE	DRG NO.	REV.	Sheet 1 of 1	
NTS	25.10.24	1658-EL-PP-03	R-0	ORIGINATOR	

RELEASED FOR PRELIMINARY TENDER INFORMATION APPROVAL CONSTRUCTION

FIRST FLOOR DEVELOPER'S SCOPE

TENDER DRAWING



SBI SCOPE

LEGEND	
SYMBOL	DESCRIPTION
	AIR CIRCUIT BREAKER
	MOULDED CASE CIRCUIT BREAKER
	MINIATURE CIRCUIT BREAKER
	CHANGE OVER SWITCH
	EARTH LEAKAGE CIRCUIT BREAKER
	PHASE INDICATING LAMP
	CURRENT TRANSFORMER
	AMMETER
	VOLTMETER
	AMMETER SELECTOR SWITCH
	VOLTMETER SELECTOR SWITCH
	AUTO/MANUAL SELECTOR SWITCH
	DISTRIBUTION BOARD - STANDARD
	POWER DISTRIBUTION BOARD - FABRICATED
	UNINTERRUPTED POWER SUPPLY
	DOL STARTER PANEL
	STAR DELTA STARTER PANEL
	STARTER WITH VFD BYPASS PANEL
	KWH METER

- NOTE : THIS DRAWING IS PREPARED FOR TENDER PURPOSE ONLY.
- THE SUCCESSFUL CONTRACTOR WILL PREPARE SHOP DRAWING BEFORE EXECUTION AND TAKE APPROVAL FROM CLIENT/CONSULTANT.
 - THE POWER DISTRIBUTION PANELS FOLLOWING DRAWINGS WILL BE PREPARED AND TAKE APPROVAL FROM CLIENT/CONSULTANT BEFORE MANUFACTURING.
 - LEGEND
 - FABRICATION AND WIRING NOTES
 - POWER SLD
 - CONTROL SLD
 - GENERAL ARRANGEMENT - EXTERNAL
 - GENERAL ARRANGEMENT - INTERNAL (FOR STARTER PANEL)
 - BILL OF MATERIAL
 - THE SHOP DRAWING FOR LIGHTING AND POWER LAYOUT WILL COMPRISE OF FOLLOWING.
 - LIGHTING LAYOUT - LIGHT POINT - PRIMARY, SECONDARY.
 - NORMAL AND EMERGENCY LIGHT POINTS.
 - CIRCUIT DIAGRAM - LIGHT POINT.
 - POWER LAYOUT - SMALL POWER POINTS - PRIMARY, SECONDARY
 - SMALL POWER POINT - NORMAL, EMULPS
 - SERVER / UPS WIRE/CABLE AND EARTHING DETAILS.
 - DB SCHEDULE - LOAD DETAILS, CONDUIT, WIRE / CABLE SIZE
 - CABLE TRAY LAYOUT - CABLE ROUTE, NO OF CABLES GOING THROUGH THE ROUTE, ACCESSORIES LIKE BEND TEE ETC. AS PER DIMENSIONAL DETAILS. TYPICAL INSTALLATION DETAILS ON CEILING AND ON WALL.
 - EARTHING AND LIGHTNING PROTECTION LAYOUTS- ROOF LAYOUT, GROUND LAYOUT, TYPICAL INSTALLATION DETAILS OF STRIP AND EARTH ELECTRODE DETAILS.
 - MCB WITH MS ENCLOSURE WILL BE INSTALLED NEAR EQUIPMENT. IN KITCHEN MCB WITH MS ENCLOSURE WILL BE WEATHER PROOF TYPE. KE : KITCHEN EQUIPMENTS
 - IN SEF PANEL STARTERS WILL BE INSTALLED IN ELECTRICAL ROOM AND ISOLATOR WILL BE INSTALLED NEAR FAN LOCATION. ISOLATOR WILL BE WEATHER PROOF IN CASE LOCATION IS IN TERRACE. STARTER AND ISOLATOR WILL BE PART OF HVAC TENDER SCOPE.

R-0	TENDER DRAWING	MSP	SMJ	PSK	11.11.24
REV	PARTICULARS OF REVISION	DRN	BYCHKD	BYAPRD.BY	DATE
REVISIONS IN DRAWINGS					

ARCHITECT :-
MITIMITRA ARCHITECT AND ASSOCIATES

PMC :-

CLIENT :-
MITIMITRA ARCHITECT AND ASSOCIATES

PROJECT :-
CLOCK TOWER, LHO SBI, KHARADI, PUNE

TITLE :-
SINGLE LINE DIAGRAM

NTS	11.11.24	1658-EL-SCH-01	0	Sheet 1 of 3
SCALE	DATE	DRG.NO.	REV.	0

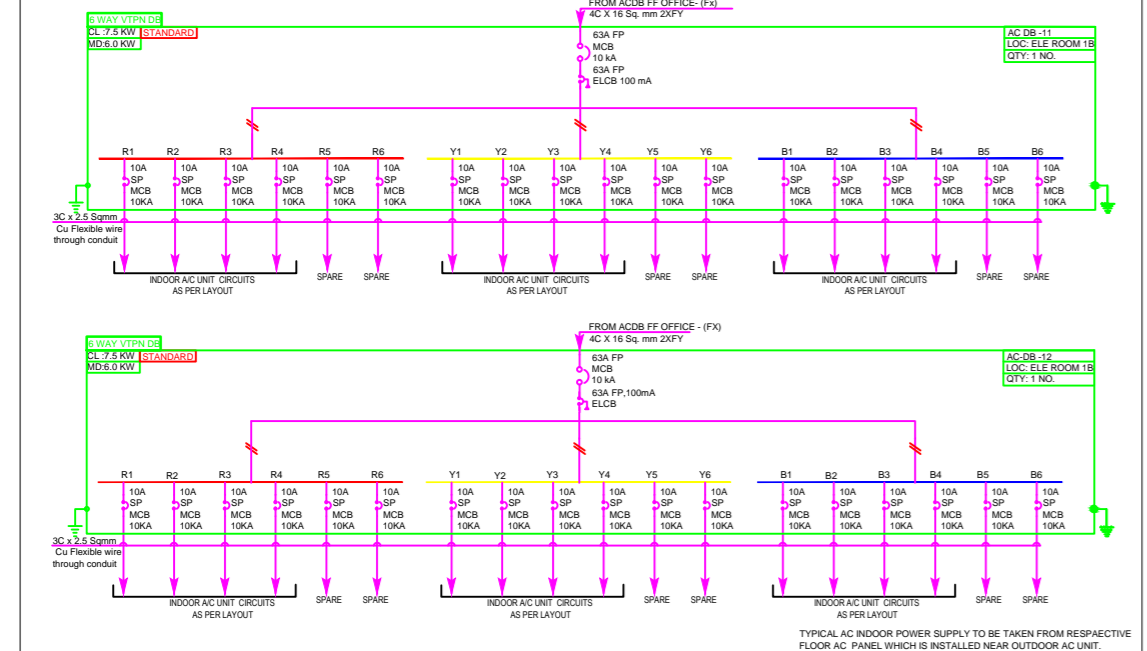
RELEASED FOR PRELIMINARY TENDER INFORMATION APPROVAL CONSTRUCTION

VISION ELECTRO - MECHANICAL CONSULTANTS PVT. LTD.

2 SHWETA 98/28 BHUSARI COLONY PUNE 411038, Tel: 25285686 Telefax: 25285685, email: office@vmdco.com

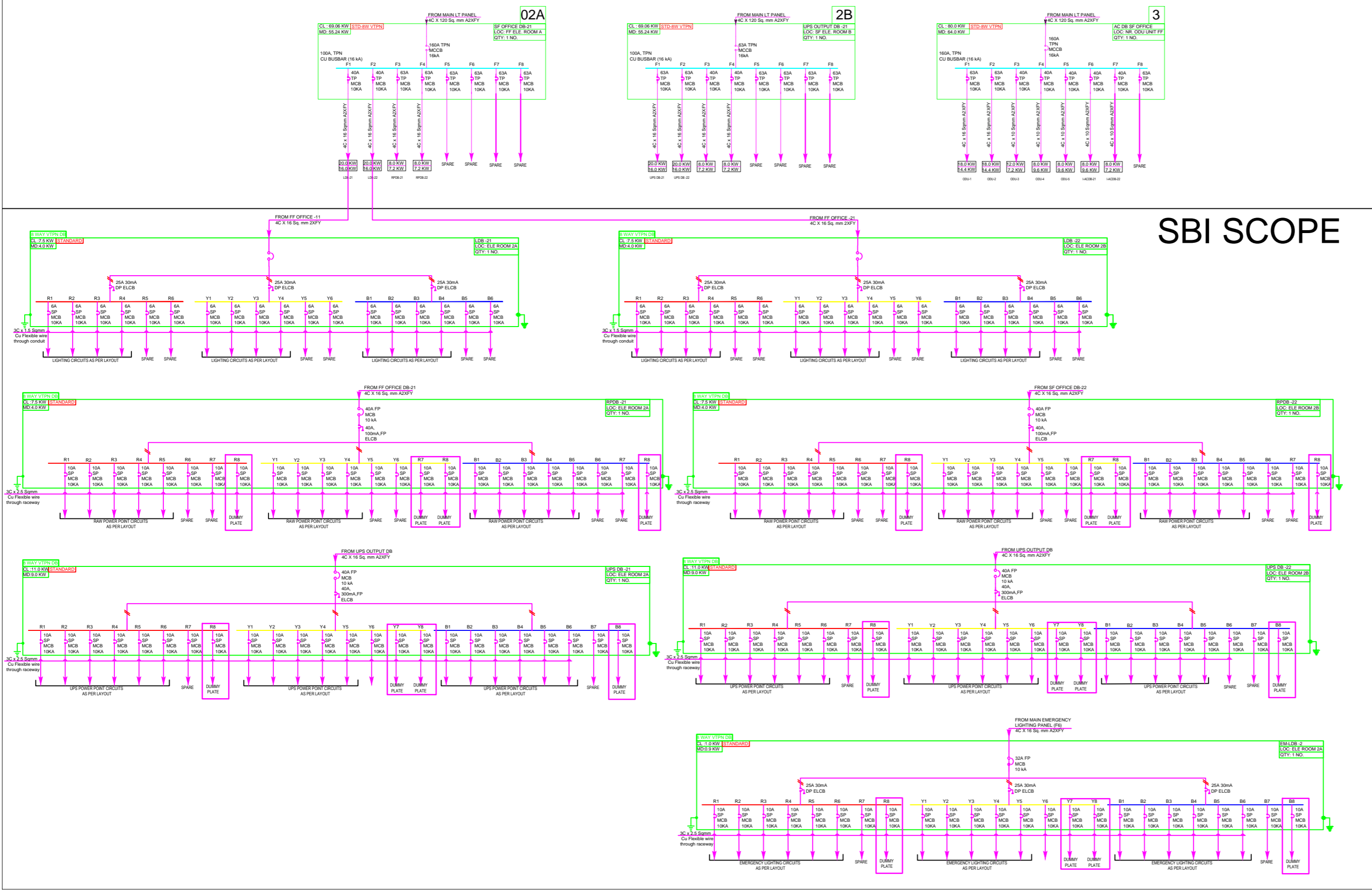
THIS DRAWING AND THE CONNECTED DESIGN IS OUR SOLE PROPERTY. IT IS LOANED ON CONDITION OF RETURN ON DEMAND. IT SHALL NOT BE COPIED, LENT OR USED WITHOUT OUR PRIOR WRITTEN CONSENT.

DEVELOPER'S SCOPE



TYPICAL AC INDOOR POWER SUPPLY TO BE TAKEN FROM RESIPACTIVE FLOOR AC PANEL WHICH IS INSTALLED NEAR OUTDOOR AC UNIT.

SECOND FLOOR DEVELOPER'S SCOPE



LEGEND	
SYMBOL	DESCRIPTION
	AIR CIRCUIT BREAKER
	MOULDED CASE CIRCUIT BREAKER
	MINIATURE CIRCUIT BREAKER
	CHANGE OVER SWITCH
	EARTH LEAKAGE CIRCUIT BREAKER
	PHASE INDICATING LAMP
	CURRENT TRANSFORMER
	AMMETER
	VOLTMETER
	AMMETER SELECTOR SWITCH
	VOLTMETER SELECTOR SWITCH
	AUTO/MANUAL SELECTOR SWITCH
	DISTRIBUTION BOARD - STANDARD
	POWER DISTRIBUTION BOARD - FABRICATED
	UNINTERRUPTED POWER SUPPLY
	DOL STARTER PANEL
	STAR DELTA STARTER PANEL
	STARTER WITH VFD BYPASS PANEL
	KWH METER

SBI SCOPE

- NOTE : THIS DRAWING IS PREPARED FOR TENDER PURPOSE ONLY.
- THE SUCCESSFUL CONTRACTOR WILL PREPARE SHOP DRAWING BEFORE EXECUTION AND TAKE APPROVAL FROM CLIENT/CONSULTANT.
 - THE POWER DISTRIBUTION PANEL'S FOLLOWING DRAWINGS WILL BE PREPARED AND TAKE APPROVAL FROM CLIENT/CONSULTANT BEFORE MANUFACTURING.
 - LEGEND
 - FABRICATION AND WIRING NOTES
 - POWER SLD
 - CONTROL SLD
 - GENERAL ARRANGEMENT - EXTERNAL
 - GENERAL ARRANGEMENT - INTERNAL (FOR STARTER PANEL)
 - BILL OF MATERIAL
 - THE SHOP DRAWING FOR LIGHTING AND POWER LAYOUT WILL COMPRISE OF FOLLOWING.
 - LIGHTING LAYOUT - LIGHT POINT - PRIMARY, SECONDARY.
 - NORMAL AND EMERGENCY LIGHT POINTS.
 - CIRCUIT DIAGRAM - LIGHT POINT.
 - CIRCUIT DIAGRAM - EMERGENCY LIGHT POINT
 - POWER LAYOUT - SMALL POWER POINTS - PRIMARY, SECONDARY
 - SMALL POWER POINT - NORMAL /EMUPS
 - SERVER /UPS WIRE/CABLE AND EARTHING DETAILS.
 - DB SCHEDULE - LOAD DETAILS, CONDUIT, WIRE /CABLE SIZE
 - CABLE TRAY LAYOUT - CABLE ROUTE, NO OF CABLES GOING THROUGH THE ROUTE, ACCESSORIES LIKE BEND TEE ETC AS PER DIMENSIONAL DETAILS. TYPICAL INSTALLATION DETAILS ON CEILING AND ON WALL.
 - EARTHING AND LIGHTNING PROTECTION LAYOUTS- ROOF LAYOUT, GROUND LAYOUT, TYPICAL INSTALLATION DETAILS OF STRIP AND EARTH ELECTRODE DETAILS.
 - MCB WITH MS ENCLOSURE WILL BE INSTALLED NEAR EQUIPMENT. IN KITCHEN MCB WITH MS ENCLOSURE WILL BE WEATHER PROOF TYPE. KE : KITCHEN EQUIPMENTS
 - IN SEF PANEL STARTERS WILL BE INSTALLED IN ELECTRICAL ROOM AND ISOLATOR WILL BE INSTALLED NEAR FAN LOCATION. ISOLATOR WILL BE WEATHER PROOF IN CASE LOCATION IS IN TERRACE. STARTER AND ISOLATOR WILL BE PART OF HVAC TENDER SCOPE.

R-0	TENDER DRAWING	MSP	SMJ	PSK	11.11.24
REV	PARTICULARS OF REVISION	DRN	BYCHKD	BYAPRD.BY	DATE

REVISIONS IN DRAWINGS

ARCHITECT :-
MITIMITRA ARCHITECT AND ASSOCIATES

PMC :-

CLIENT :-
MITIMITRA ARCHITECT AND ASSOCIATES

PROJECT :-
CLOCK TOWER, LHO SBI, KHARADI, PUNE

TITLE :-
SINGLE LINE DIAGRAM

NTS	11.11.24	1658-EL-SCH-01	0	Sheet 2 of 3
SCALE	DATE	DRG.NO.	REV.	

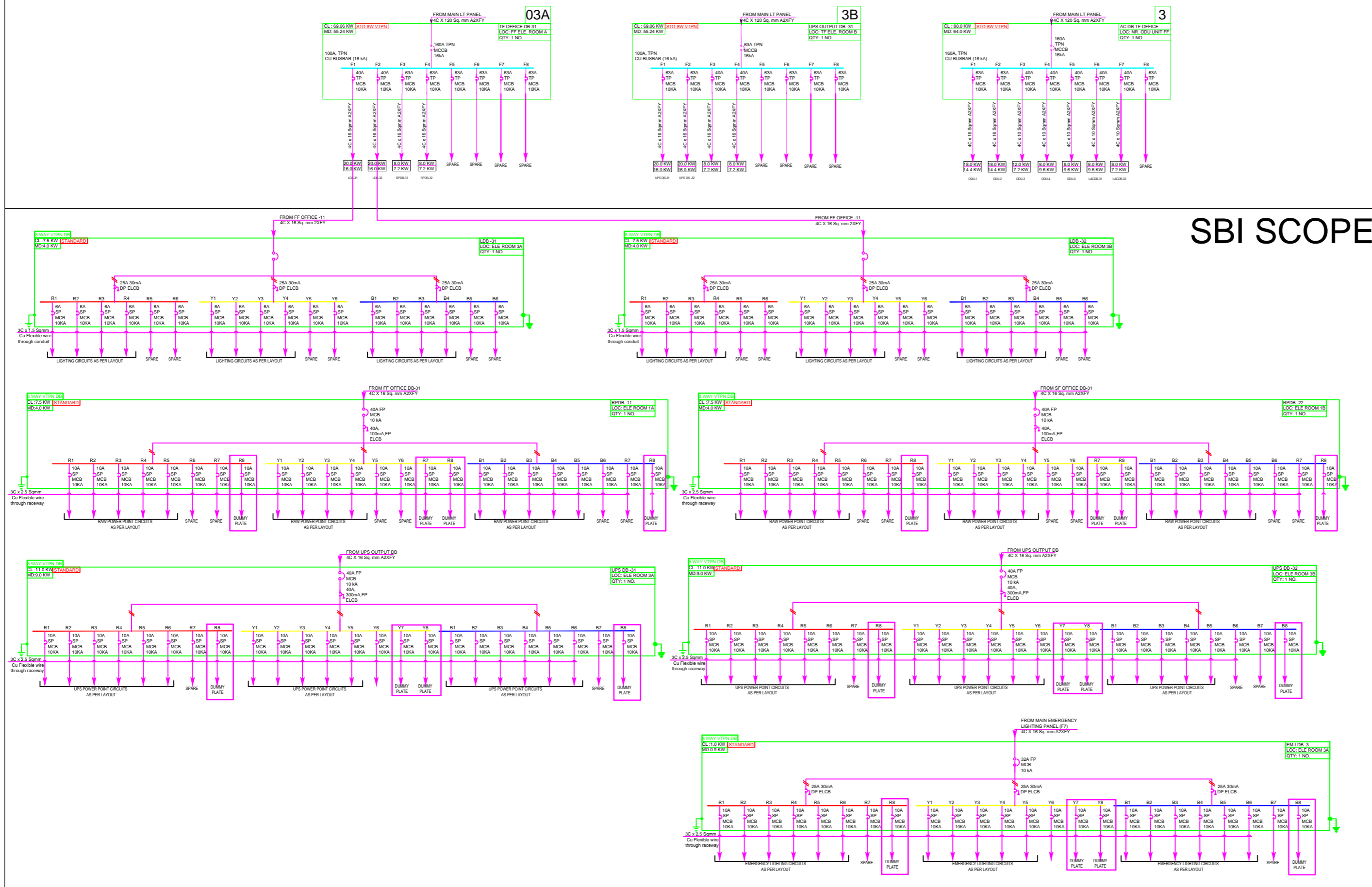
RELEASED FOR PRELIMINARY TENDER INFORMATION APPROVAL CONSTRUCTION

THIRD FLOOR

DEVELOPER'S SCOPE

TENDER DRAWING

LEGEND	
SYMBOL	DESCRIPTION
	AIR CIRCUIT BREAKER
	MOULDED CASE CIRCUIT BREAKER
	MINIATURE CIRCUIT BREAKER
	CHANGE OVER SWITCH
	EARTH LEAKAGE CIRCUIT BREAKER
	PHASE INDICATING LAMP
	CURRENT TRANSFORMER
	AMMETER
	VOLTMETER
	AMMETER SELECTOR SWITCH
	VOLTMETER SELECTOR SWITCH
	AUTO/MANUAL SELECTOR SWITCH
	DISTRIBUTION BOARD - STANDARD
	POWER DISTRIBUTION BOARD - FABRICATED
	UNINTERRUPTED POWER SUPPLY
	DOL STARTER PANEL
	STAR DELTA STARTER PANEL
	STARTER WITH VFD BYPASS PANEL
	KWH METER



SBI SCOPE

- NOTE : THIS DRAWING IS PREPARED FOR TENDER PURPOSE ONLY.
- THE SUCCESSFUL CONTRACTOR WILL PREPARE SHOP DRAWING BEFORE EXECUTION AND TAKE APPROVAL FROM CLIENT/CONSULTANT.
 - THE POWER DISTRIBUTION PANELS FOLLOWING DRAWINGS WILL BE PREPARED AND TAKE APPROVAL FROM CLIENT/CONSULTANT BEFORE MANUFACTURING.
 - LEGEND
 - FABRICATION AND WIRING NOTES
 - POWER SLD
 - CONTROL SLD
 - GENERAL ARRANGEMENT - EXTERNAL
 - GENERAL ARRANGEMENT - INTERNAL (FOR STARTER PANEL)
 - BILL OF MATERIAL
 - THE SHOP DRAWING FOR LIGHTING AND POWER LAYOUT WILL COMPRISE OF FOLLOWING.
 - LIGHTING LAYOUT - LIGHT POINT - PRIMARY, SECONDARY.
 - NORMAL AND EMERGENCY LIGHT POINTS.
 - CIRCUIT DIAGRAM - LIGHT POINT.
 - POWER LAYOUT - SMALL POWER POINTS - PRIMARY, SECONDARY
 - SMALL POWER POINT - NORMAL, EM/UPS
 - SERVER/UPS WIRE/CABLE AND EARTHING DETAILS.
 - DB SCHEDULE - LOAD DETAILS, CONDUIT, WIRE /CABLE SIZE
 - CABLE TRAY LAYOUT - CABLE ROUTE, NO OF CABLES GOING THROUGH THE ROUTE, ACCESSORIES LIKE BEND TEE ETC AS PER DIMENSIONAL DETAILS. TYPICAL INSTALLATION DETAILS ON CEILING AND ON WALL.
 - EARTHING AND LIGHTNING PROTECTION LAYOUTS- ROOF LAYOUT, GROUND LAYOUT, TYPICAL INSTALLATION DETAILS OF STRIP AND EARTH ELECTRODE DETAILS.
 - MCB WITH MS ENCLOSURE WILL BE INSTALLED NEAR EQUIPMENT. IN KITCHEN MCB WITH MS ENCLOSURE WILL BE WEATHER PROOF TYPE. KE : KITCHEN EQUIPMENTS
 - IN SEF PANEL STARTERS WILL BE INSTALLED IN ELECTRICAL ROOM AND ISOLATOR WILL BE INSTALLED NEAR FAN LOCATION. ISOLATOR WILL BE WEATHER PROOF IN CASE LOCATION IS IN TERRACE. STARTER AND ISOLATOR WILL BE PART OF HVAC TENDER SCOPE.

R-0	TENDER DRAWING	MSP	SMJ	PSK	11.11.24
REV	PARTICULARS OF REVISION	DRN	BYCHKD	BYAPRD.BY	DATE

REVISIONS IN DRAWINGS

ARCHITECT :- MITIMITRA ARCHITECT AND ASSOCIATES

PMC :-

CLIENT :- MITIMITRA ARCHITECT AND ASSOCIATES

PROJECT :- CLOCK TOWER, LHO SBI, KHARADI, PUNE

TITLE :- SINGLE LINE DIAGRAM

NTS	11.11.24	1658-EL-SCH-01	0	Sheet 3 of 3
SCALE	DATE	DRG.NO.	REV.	

RELEASED FOR PRELIMINARY TENDER INFORMATION APPROVAL CONSTRUCTION